

AGENCE DE LA GRANDE MOTTE



Cabinet Noblot
www.agence-grandemotte.com

04 67 56 52 47

1 040 000 €

Occupational immeuble

17 rooms

Surface : 492 m²

Exposition : Est ouest

View : Citadine

Hot water : Individuelle électrique

Inner condition : to renovate

Building condition : good

Features :

Double Glazing, Lift, Air conditioning

6 parkings

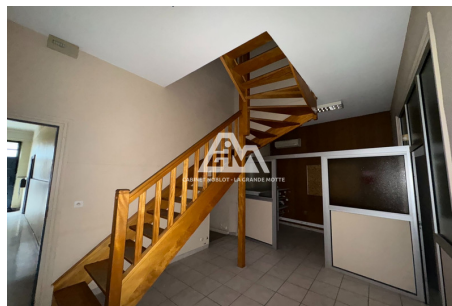


Immeuble 6790 Lunel

In Lunel - On a boulevard - Building for sale with a surface area of 186 m² on the ground floor, a surface area of 148 m² on the 1st floor and a surface area of 157 m² on the 2nd floor - The floors are served by stairs and a lift - Possibility of creating several apartments and/or commercial premises - Air conditioning, double glazing - Courtyard with the possibility of parking 6 cars - Contact us for more information - "Information on the risks to which this property is exposed is available on the website www.georisques.gouv.fr"

Document non contractuel

05/02/2025 - Prix T.T.C



Agence de la Grande Motte - Cabinet NOBLOT, Le St Clair, 13 place des Cosmonautes, 34280 La Grande Motte

Tél: 04 67 56 52 47 - Fax: 04 67 29 99 38 - bernardnoblot@orange.fr

Carte professionnelle 34022016000008991 - RCS 784 156 887

Code NAF 6831Z - SIRET 784 156 887 000 19 - Garantie financière : QBE Insurance - 110 Esplanade du Général de Gaulle - 92931 LA DEFENSE

CEDEX - Document non contractuel